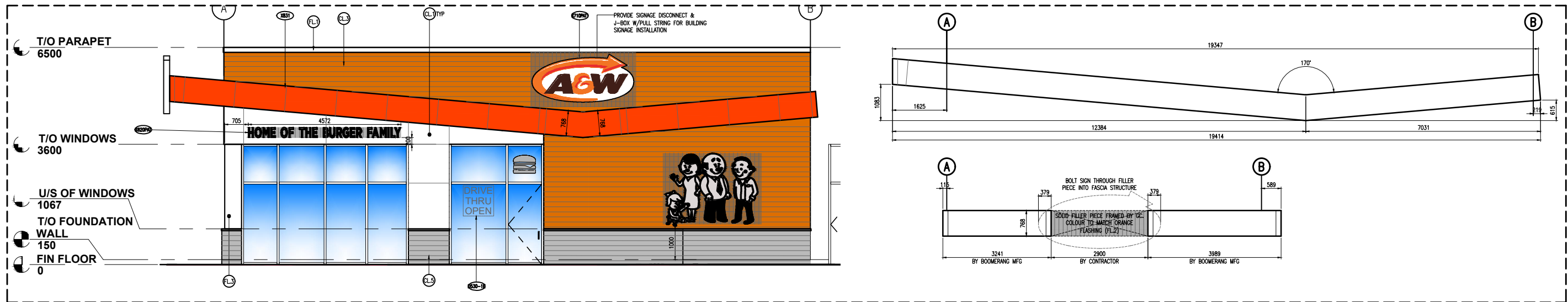
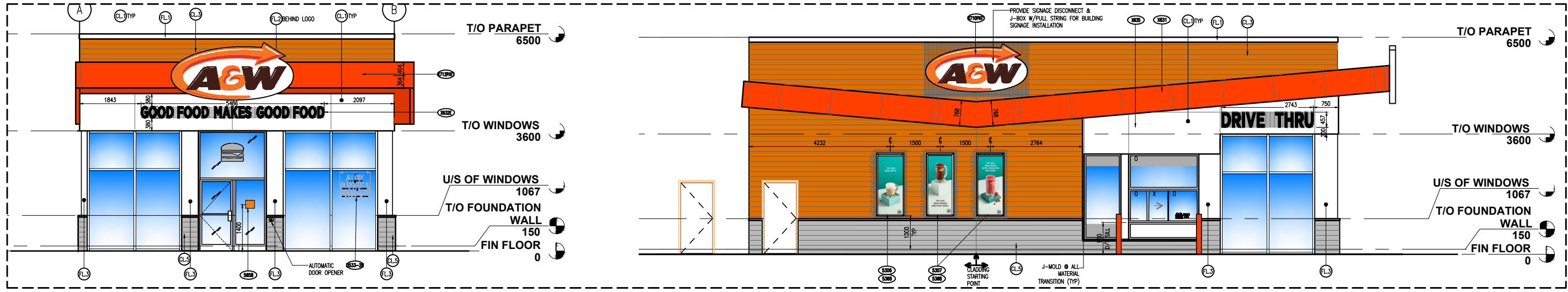


EXTERIOR FINISH SCHEDULE

CODE	ITEM	APPROVED SPECIFICATION	APPROVED COLOUR & MAKE	LEGEND	CODE	ITEM	APPROVED SPECIFICATION	APPROVED COLOUR & MAKE	LEGEND
CL.1	EXTERIOR WALL (WHITE PANELS ABOVE DINING ROOM WINDOWS)	PRE-FINISHED ALUMINUM COMPOSITE MATERIAL (ACM) PANELS WITH HIDDEN FASTENERS	MAKE : ALCOTEX COLOR CODE : DM 1102 COLOR NAME : YELLOW WHITE		CL.5	EXTERIOR WALL (DARK GREY FOUNDATION WALL)	PRE-FINISHED ALUMINUM PROFILE CLADDING WITH HIDDEN FASTENERS.	MAKE : KNOTWOOD - KED150 COLOR : INTERPON D2525, TITANIUM PEARL, MATT YY263A	
CL.2	UNDERSIDE OF BOOMERANG (SOFFIT)	PRE-FINISHED ALUMINUM COMPOSITE MATERIAL (ACM) PANELS WITH HIDDEN FASTENERS	MAKE : ALCOTEX COLOR CODE : DM 1110 COLOR NAME : PURE ORANGE		FL.1	FLASHING (PARAPET), DRIP FLASHING (BETWEEN FOUNDATION WALL & EXTERIOR WALL SIDING)	PREFINISHED SHEET METAL	TO MATCH CL.1	
CL.3	EXTERIOR WALL (WOOD GRAIN)	PRE-FINISHED ALUMINUM PROFILE CLADDING WITH HIDDEN FASTENERS.	MAKE : KNOTWOOD - KED150 COLOR : KNOTWOOD ATLANTIC CEDAR		FL.2	FLASHING (BOOMERANG)	PREFINISHED SHEET METAL	TO MATCH CL.2	
CL.4	PORTICO (FRONT & SIDE ENTRANCE DOORS)	PRE-FINISHED ALUMINUM COMPOSITE MATERIAL (ACM) PANELS WITH HIDDEN FASTENERS	MAKE : ALCOTEX COLOR CODE : DM 1110 COLOR NAME : PURE ORANGE		PW1	PLYWOOD BACKING	3/4" PLYWOOD BETWEEN FRAME		



1 EXTERIOR ELEVATION: FRONT FACADE
SCALE: 1:125



2 EXTERIOR ELEVATION: SIDE FACADE
SCALE: 1:125

3 EXTERIOR ELEVATION: DRIVE THRU/ REAR FACADE
SCALE: 1:125

REVISIONS		
No.	DESCRIPTION	DATE
01	ISSUED FOR APPROVAL	2023.11.27
02	RE-ISSUED FOR APPROVAL	2023.11.28



Project
A&W RESTAURANT
 357 HWY 2
 GANANOQUE, ON.
 DRAWING TITLE
FEASIBILITY EXTERIOR ELEVATIONS

Date Created
MARCH 13TH 2023
 A&W No.
21047
 Drawn By
AM
 Checked By
LM
 Concept
ENDCAP
 Page Number
FE-05