

Village of Lansdowne Urbanization Design

Public Information Centre

September 18th, 2024

**Welcome!
Please sign in.**

Objectives of the Design



Integration of Urban Cross Section Elements

- Accessible Sidewalks to meet current industry standards.
- Curb and gutter to channel overland flow to designated outlets.



Stormwater Infrastructure Upgrades

- Formalize storm drainage paths using curb, gutter, and spillways
- Implement catch basins to formalize drainage areas.
- Redirect drainage paths currently being directed through private property.



Sanitary Spot Repairs and Upgrades

- Identify sanitary spot repairs through available CCTV footage and reports.

Design Methodology and Timeline

Preliminary Design

- Review and collect background information.
- Identify opportunities for improvement of roads and drainage infrastructure.
- Identify design constraints
- Develop proposed standard cross-sections.
- Undertake public consultation activities.
- Consider public feedback and finalize preliminary design drawing set.

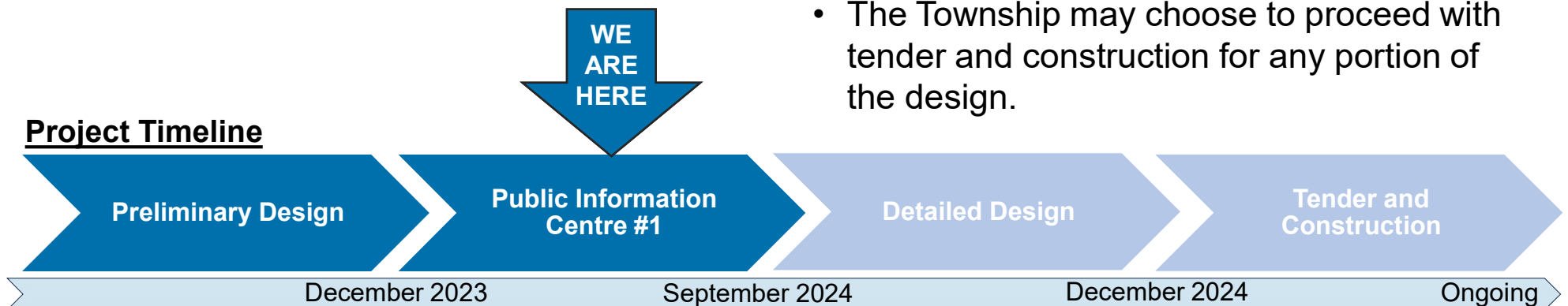
Detailed Design

- Develop specifications and tender drawings (including proposed alignment, earthwork requirements, stormwater drainage details and flow control devices, if needed.)
- Develop proposed stormwater management.
- Identify permitting requirements for proposed construction.

Tender and Construction

- The Township may choose to proceed with tender and construction for any portion of the design.


Project Timeline



Overview of Project Area

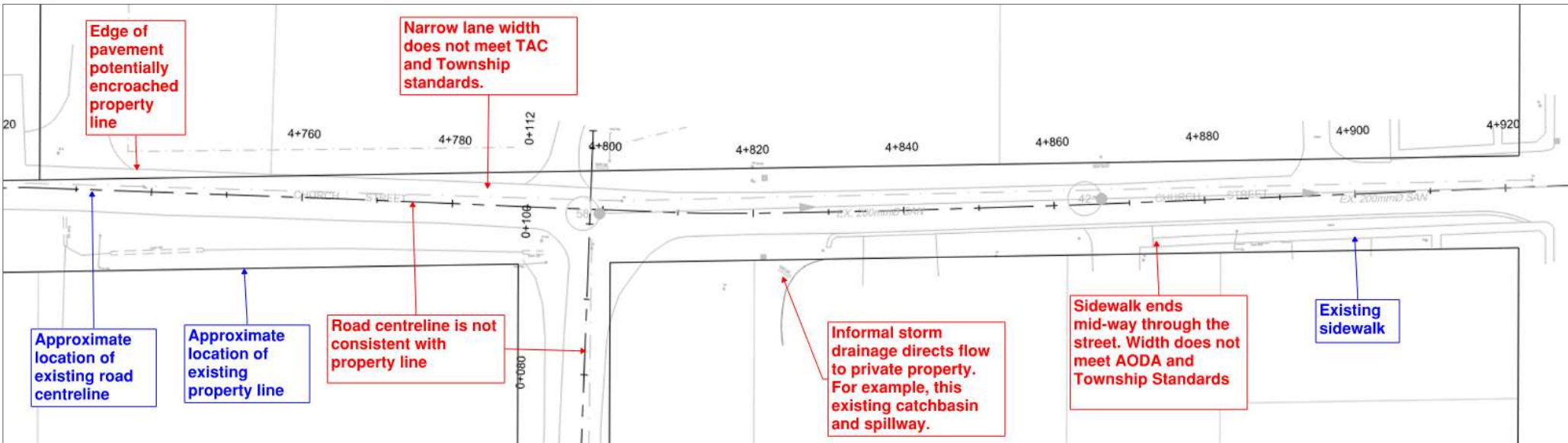
- This design will aim to provide standard urbanized cross-sections and improve drainage on local roads.
- County Roads (Prince Street and King Street West) are not included in this project.

Legend

-  Project Boundary
-  Out of Scope (County-Owned Roads)



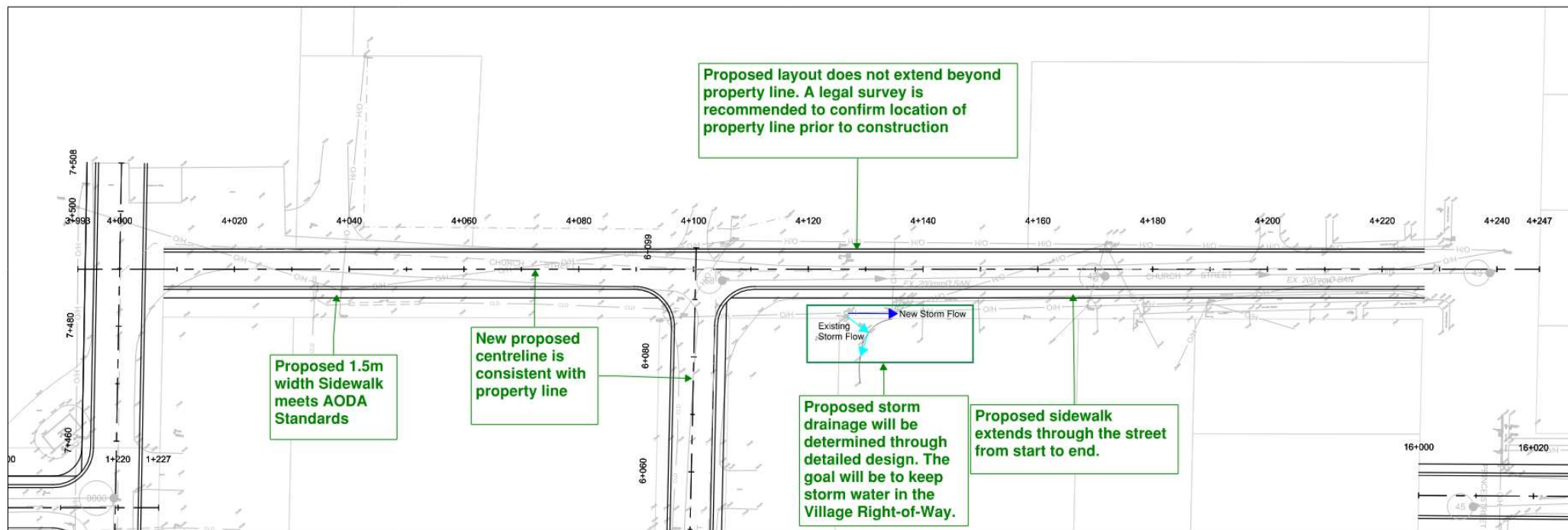
Existing Road Alignments



Grey = Existing Road Features | **Black** = Property Lines and Centreline (Approximate Location)

- This is an example of a road alignment with opportunities for urbanization and drainage improvements.

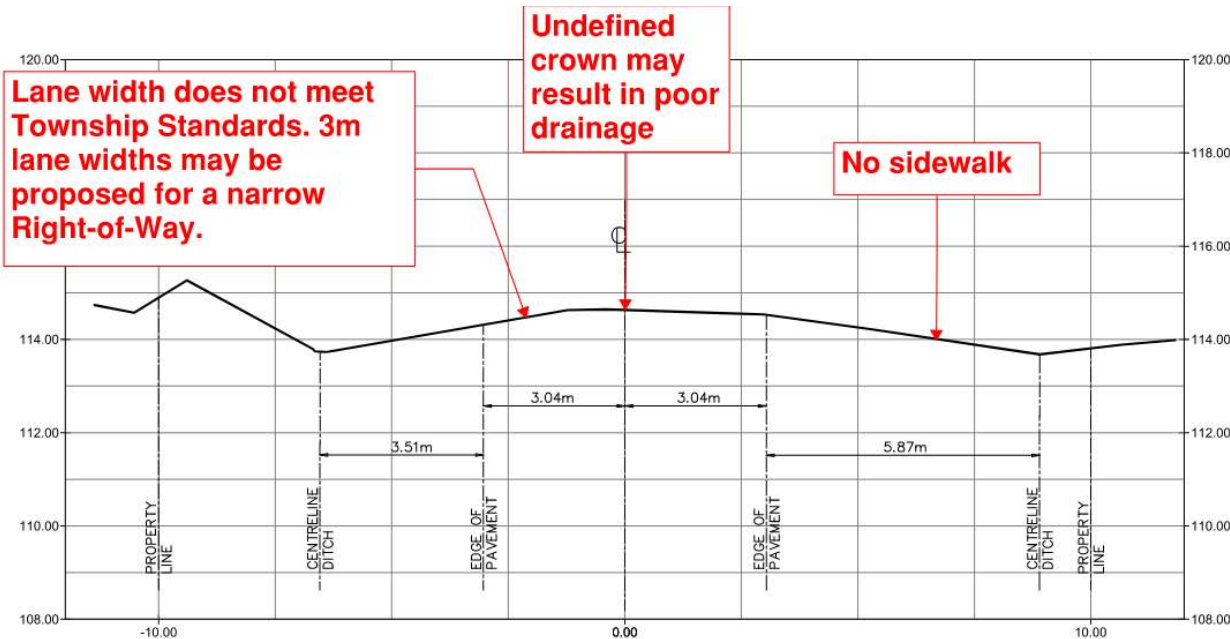
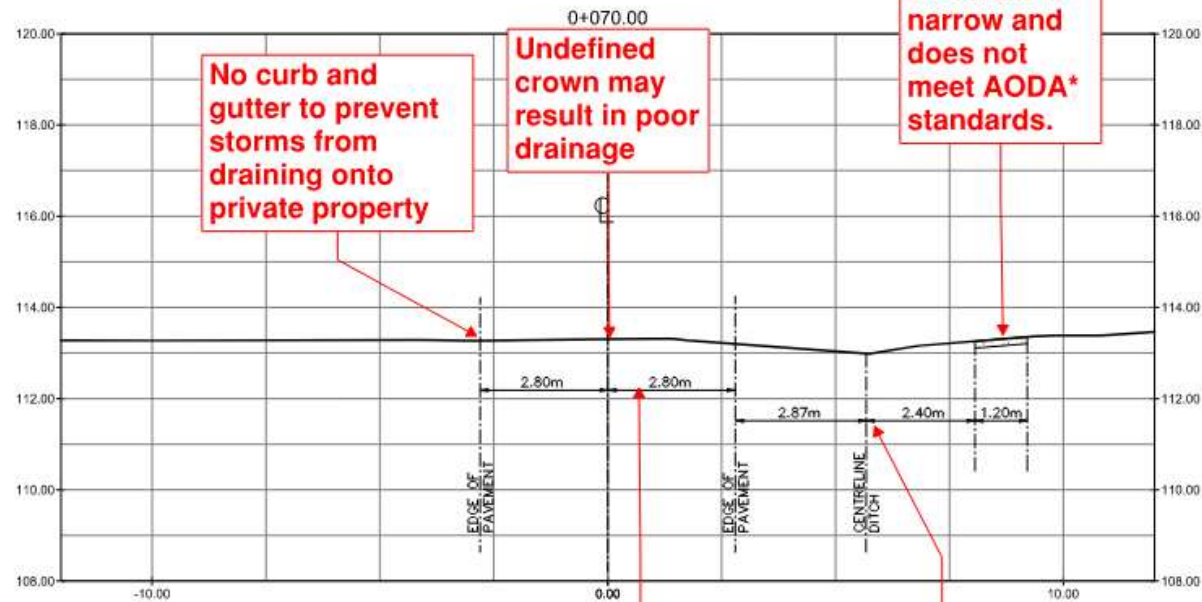
Proposed Road Alignment Improvements



Grey = Existing Road and Surface Features | **Black** = Proposed Road Features

- Existing road alignment improvements are based on Township, TAC, and AODA Standards.
- The above is an example of a preliminary layout. Plans will be finalized through detailed design, in consideration of potential impacts to residents and utility relocations, if required.

Existing Road Cross Sections

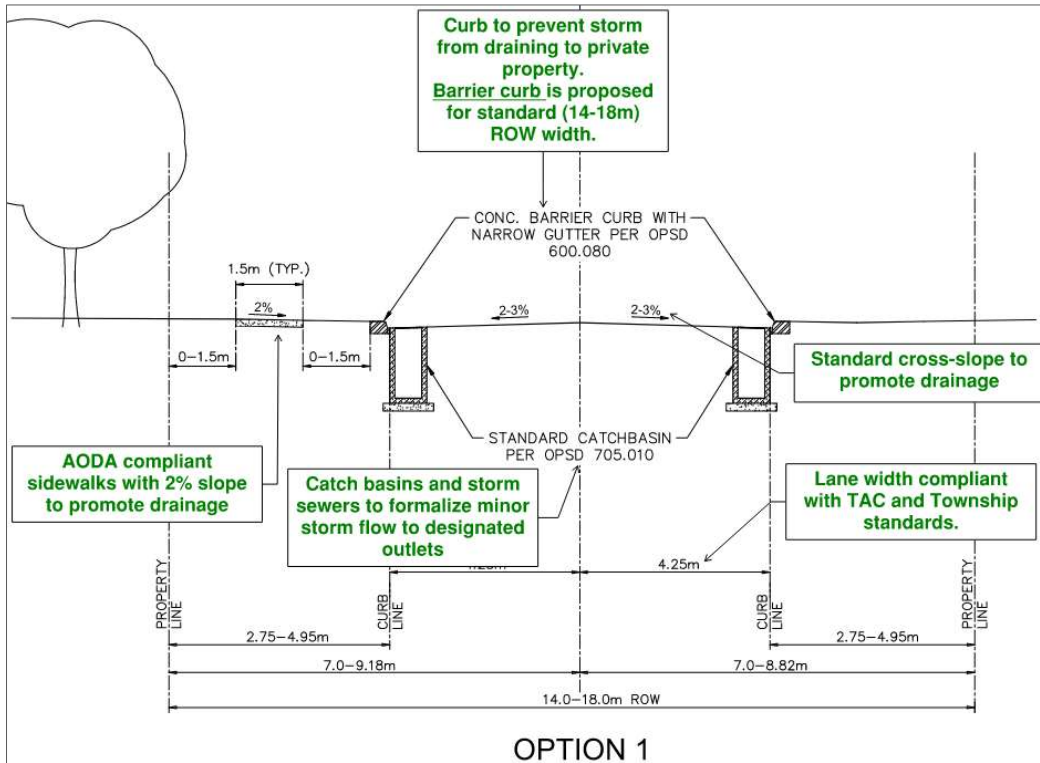


Lane width does not meet TAC* and Township Standards

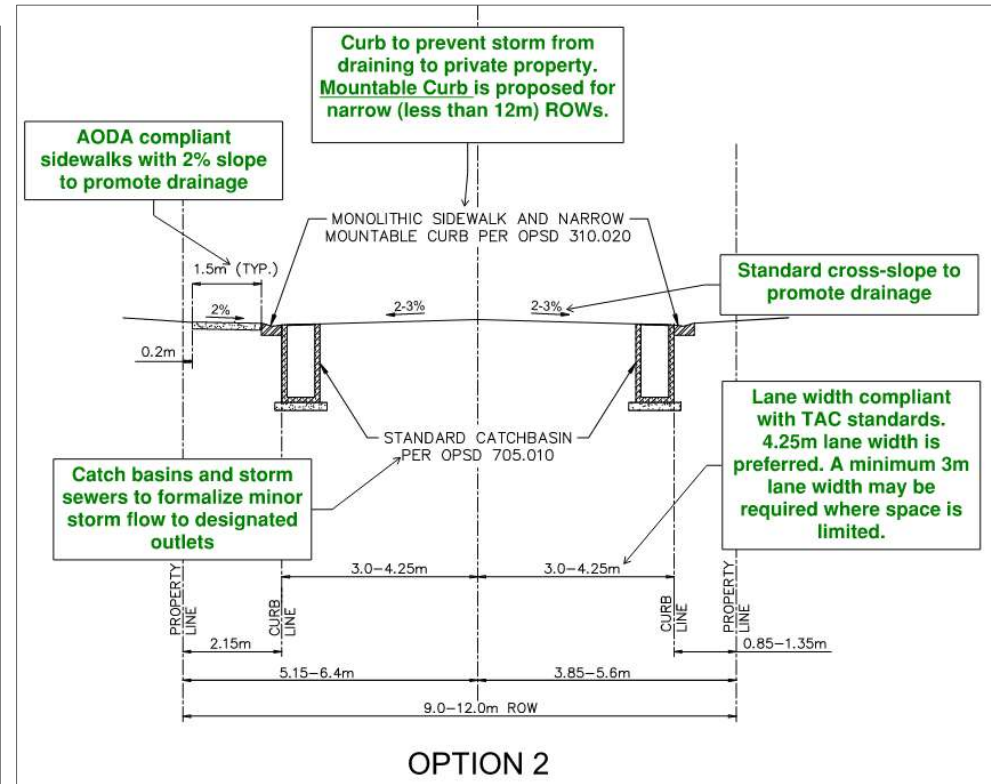
Ditches are typically a rural cross section feature and requires some maintenance

*AODA (Accessibility for Ontarians with Disabilities Act)
TAC (Transportation Association of Canada)

Proposed Road Cross Sections



Standard ROW Width (14 to 18 m)






Narrow ROW Width (9 to 12m)

*AODA (Accessibility for Ontarians with Disabilities Act)
TAC (Transportation Association of Canada)
ROW (Right-of-Way)

Proposed Cross Section Layout

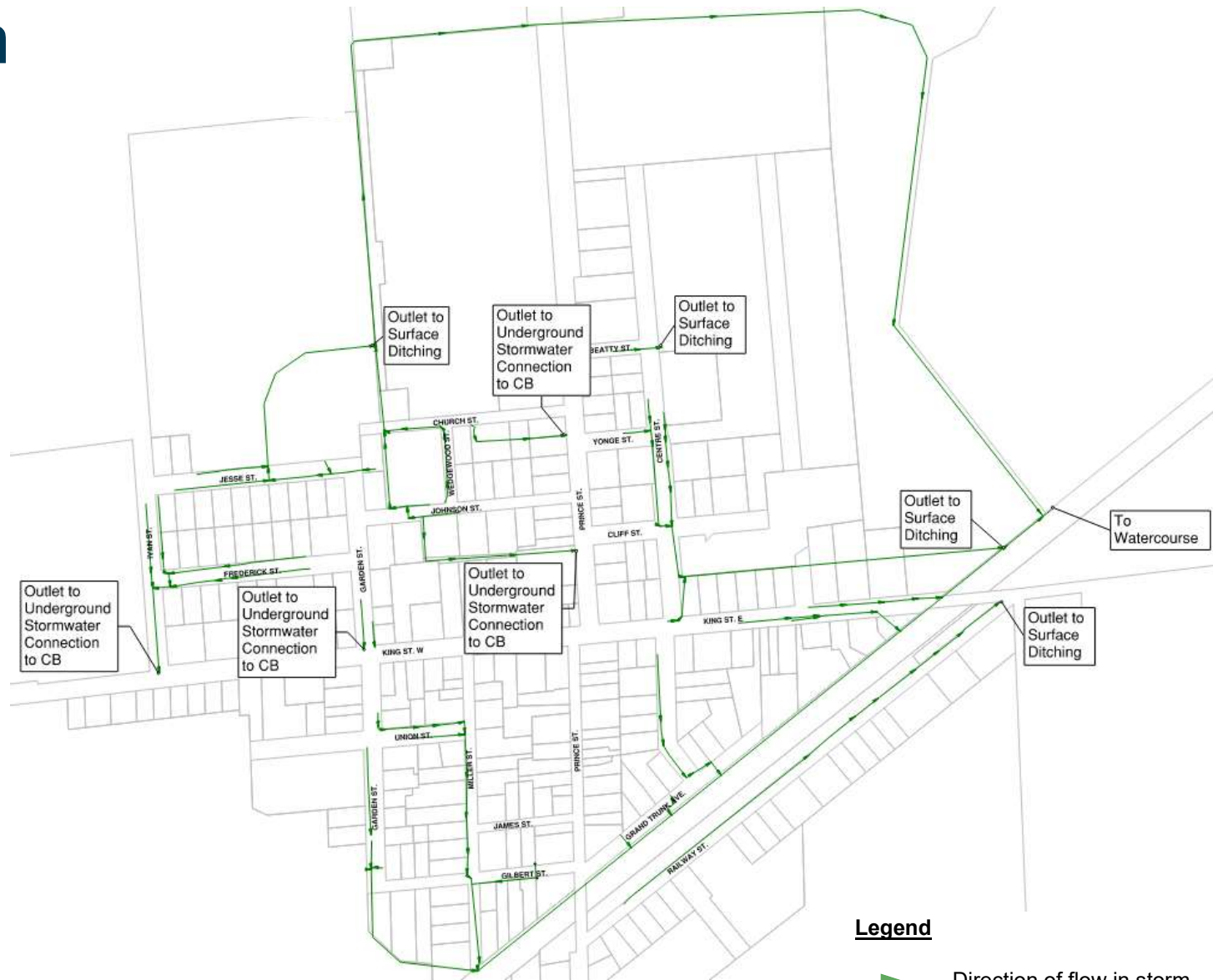


Legend

-  **OPTION 1:** Standard ROW (Barrier Curb, 4.25m lane width)
-  **OPTION 2:** Narrow ROW (Mountable Curb, 3m to 4.25m lane width)
-  Not included in design (County-Owned Roads)


Existing Storm Drainage

- The Village has an informal stormwater management network, consisting of catch basins at low points routed to the nearest ditch.
- There are several outlets throughout the Village, which eventually lead to a watercourse east of the Village.
- There are some instances of storm flows being directed through private property.
- The proposed storm sewer design for the Village will be finalized through detailed design.



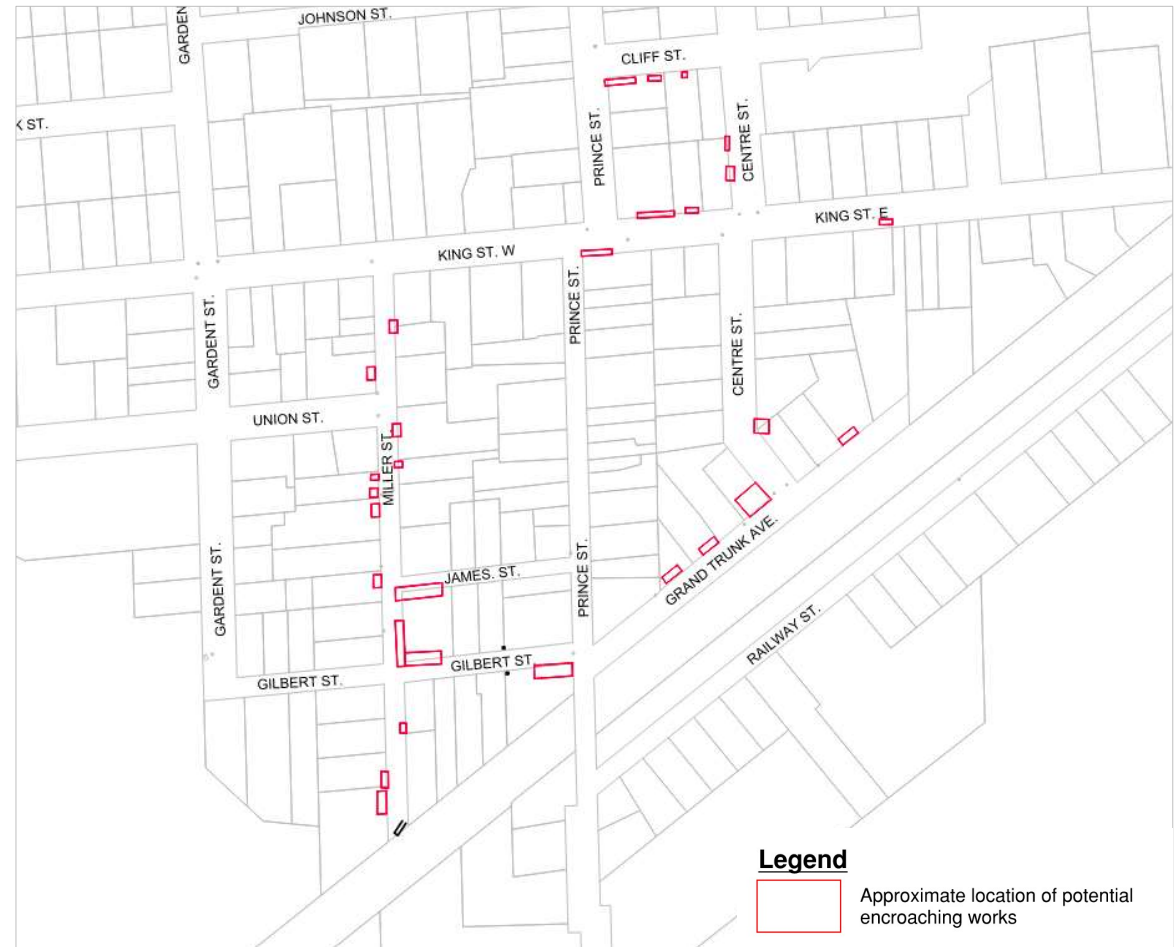
Existing Stormwater Flow

Legend

 Direction of flow in storm sewers or ditches

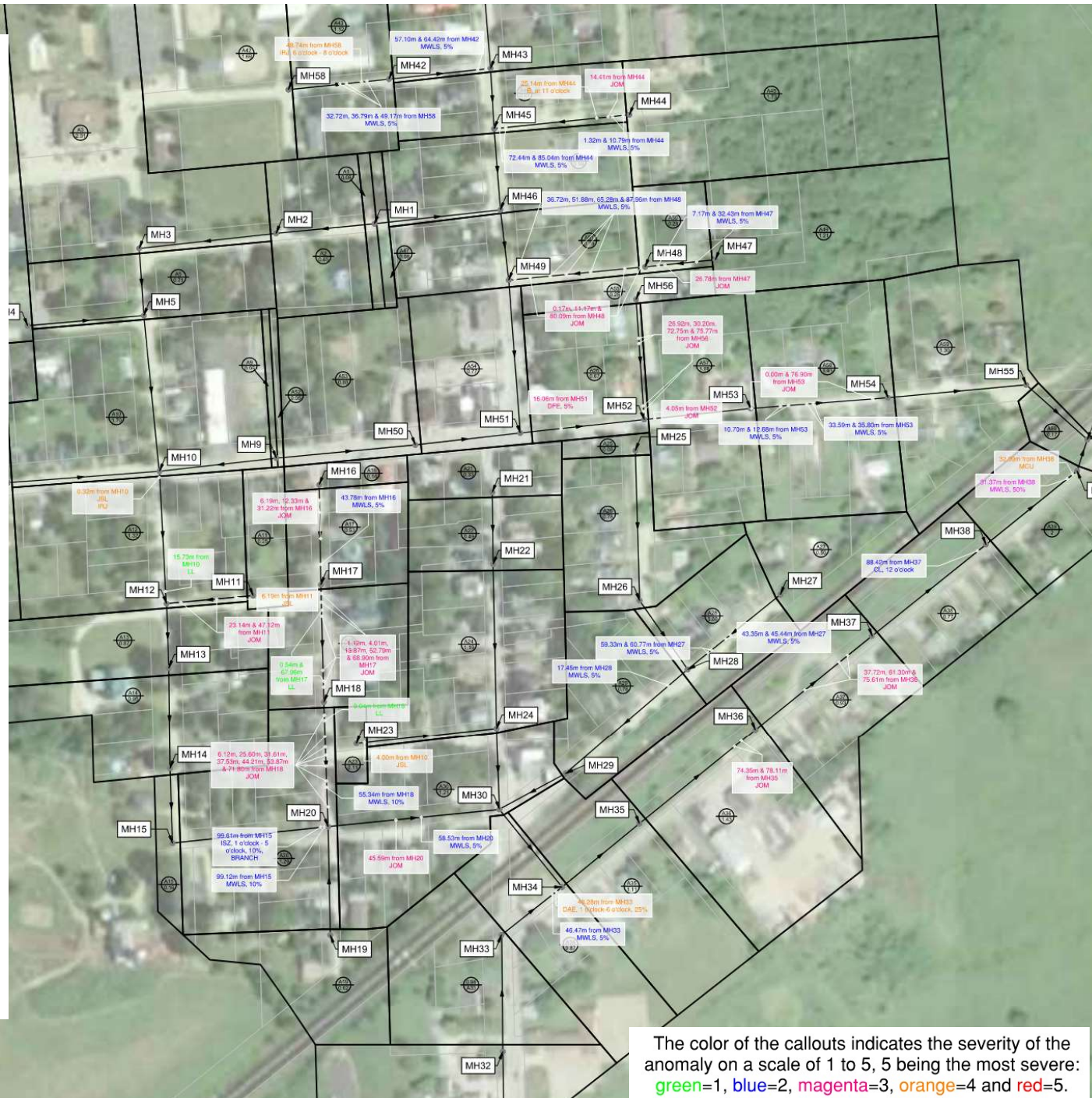
Design Constraints

- A topographical survey and review of Village property lines were used to identify features with the potential to be affected by the proposed construction.
- Utility impacts were considered during preliminary design. The proposed layout was designed to reduce impacts on existing utilities. Some relocation of hydro and communications infrastructure may be recommended as part of detailed design. .
- Consultations with utilities and key stakeholders are ongoing to reduce overall construction impacts.
- A legal survey is recommended prior to construction to confirm features located within the Village Right-of-Way.



Sanitary Spot Repairs

- Sanitary sewer inspection reports and CCTV footage were reviewed to identify and map sanitary sewers in need of repair.
- Proposed repairs will depend on the severity and type of damage.
- Locations with severe damage is indicated in orange and red.
- The Lansdowne Infrastructure Assessment Update (2022) identified that the Railway Street Sanitary Sewer should be upgraded to meet long-term demands.

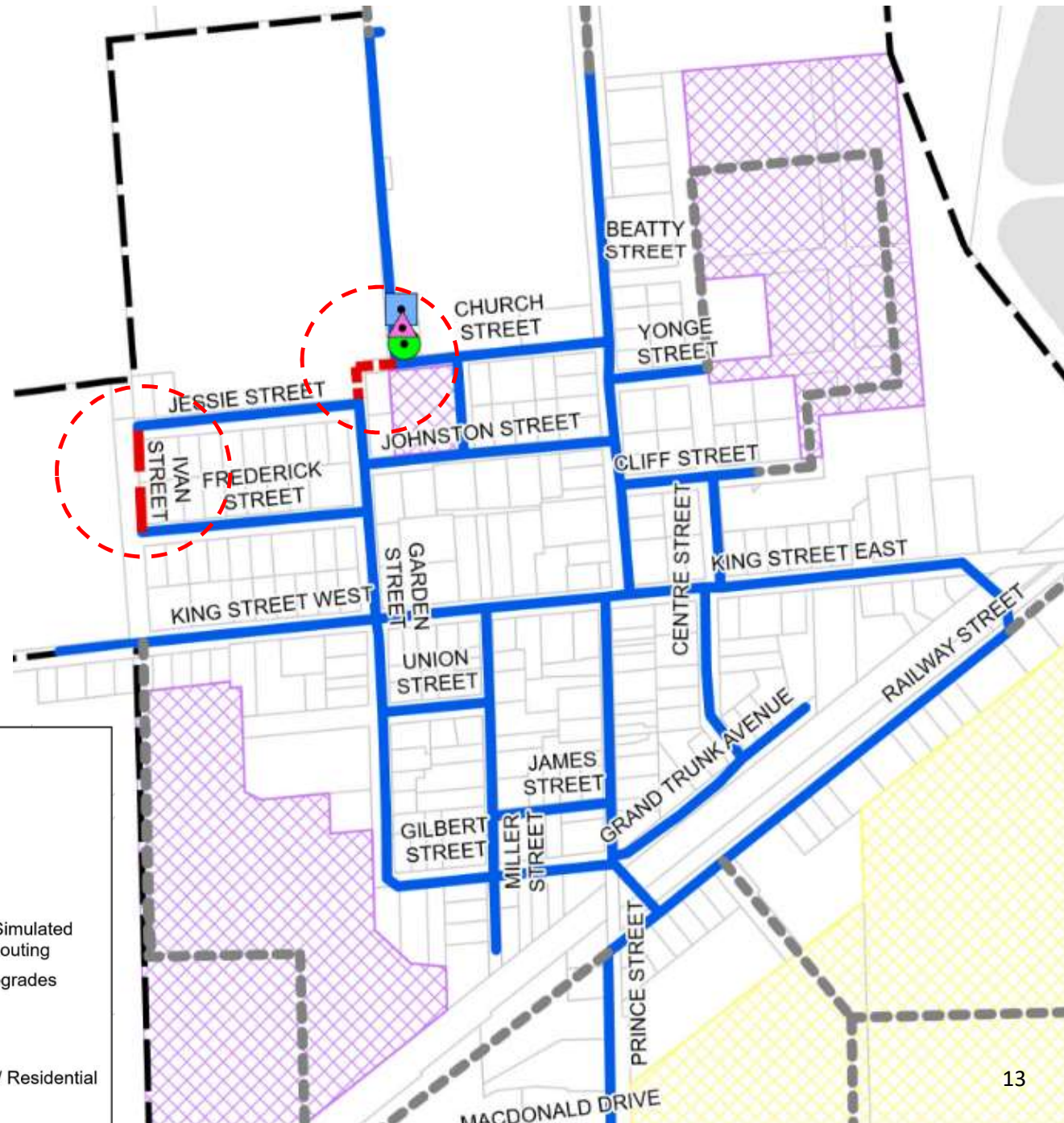
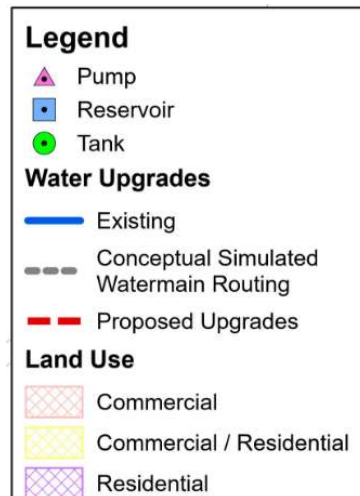


The color of the callouts indicates the severity of the anomaly on a scale of 1 to 5, 5 being the most severe: green=1, blue=2, magenta=3, orange=4 and red=5.

Watermain Upgrades

The Lansdowne Standpipe Environmental Assessment (2024) recommended the following upgrades:

- New 200mm watermain connecting Church Street and Jessie Street.
- New 200mm watermain on Ivan Street connecting Jessie Street and Frederick Street.



Next Steps

Collect comments from Public Information Centre #1.

Complete Detailed Design

Construction Projects to commence as determined by Municipality.

How to Participate

- Send written comments to the project contacts at the Township of Leeds and the Thousand Islands and J.L. Richards listed below. Please respond by September 30th, 2024.

David Holliday

Director of Operations
Township of Leeds and the Thousand Islands
Phone: 613-659-2415 ext. 211
Email: directoroperations@townshipleeds.on.ca

Steve Saxton, P.Eng.

Associate, Senior Civil Engineer
J.L. Richards & Associates Limited
Phone: 343-302-5406
Email: ssaxton@jlrichards.ca

- Visit the Project website at _____ for more updates.